

5M x 2M LINKED U-SHAPE JUMBO POP UP DISPLAY

Artwork Specification

MEASUREMENTS

11 Panels = 2x D-End Panels, 7x Front Panels & 2x Linking Panels

- Total Artwork size: 7,816mm (w) x 2,968mm (h)
- Artwork size 25%: 1,954mm (w) x 742mm (h)
- Front panels = 732mm / 183mm (25%)
- D-end panels = 673mm / 168.25mm (25%)
- Linking panel = 673mm / 168.25mm (25%)

Template below not to scale, please use measurements provided

GENERAL GUIDELINES

For optimum results, we require all artwork documents to be submitted in **Vector Format** in either **EPS, Adobe Illustrator (Ai) or High Quality PDF**

Please ensure that **all text has been outlined**, any images or placed items are **linked / embedded** within the document and that artwork does **not exceed over 500MB**

No bleed or crop marks | Set up your artwork in **CMYK at 300dpi**

Set up your artwork as **1 full piece** and not individual panels

To achieve a solid black in your artwork, please use the following colour reference: **C:100 / M:100 / Y:100 / K:100**

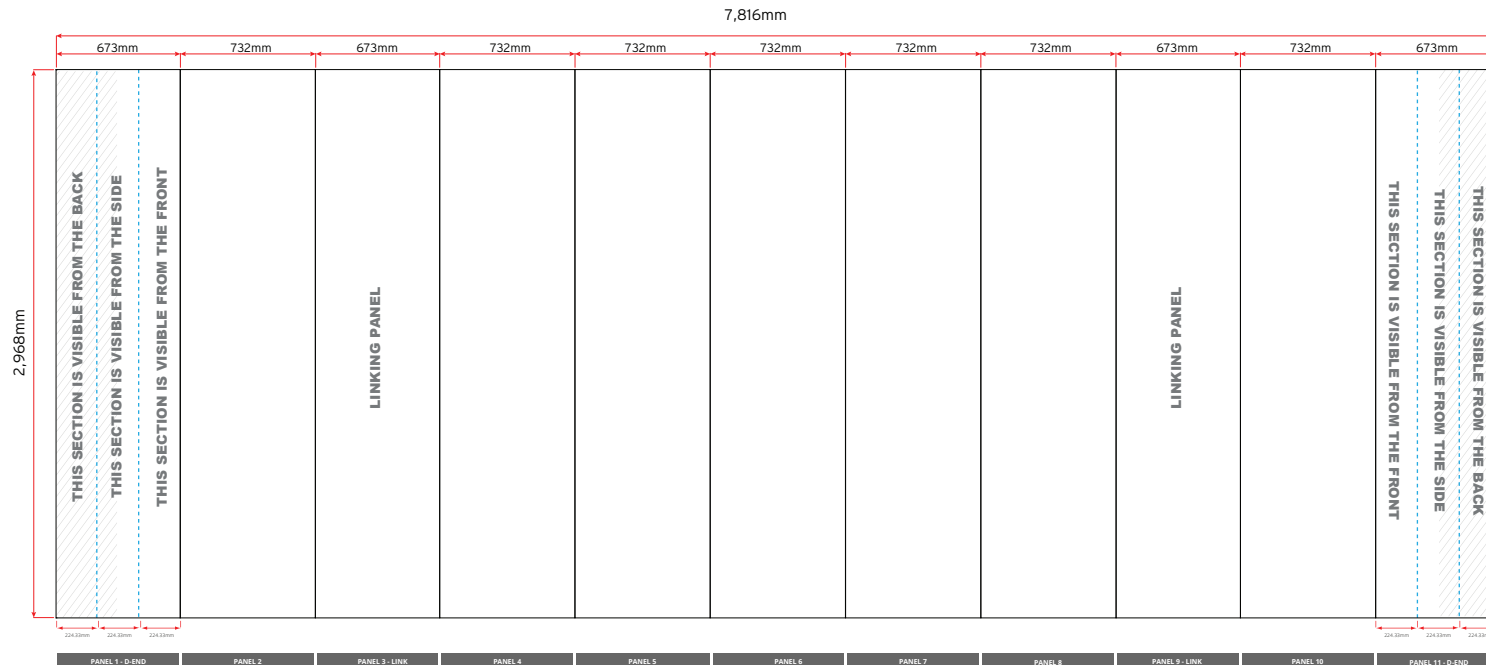
The artwork should be **sized at 25%** of the total artwork size

For text, images or logos on the D-End panels, please position items in accordance with the diagram

FOOTPRINT



01733 511030
sales@xldisplays.co.uk



Template not to scale, please use measurements provided